



# Carbon Monoxide Gas Sensor

(Model: MQ-K7B)

# Manual

Version: 1.2

Valid from: May.1st, 2018

Taiyuan Tengxing sensor technology Co., Ltd

# Statement

1. The copyright of instructions belong to Taiyuan Tengxing sensor technology Co., Ltd(hereinafter referred to as the Company), nobody is allowed to copy, translate, spread or store without written approval.
2. Thanks for using our product. In order to use the products more smoothly, reduce faults result from inappropriate using, please read the instructions carefully before using and follow the rules suggested strictly. Anyone who don ' t follow the instructions, disassemble or change the internal components without permission will afford the loss.
3. The color, style and size of the product is subject to the object you received.
4. The company follows the idea of scientific and technological progress, make efforts to product-improving and technology-innovating. So we have the right to improve product without prior notice.
5. Please make sure it ' s valid before using the instructions. Any good suggestions from you is welcomed.
6. The instructions should be well kept.

# MQ-K7B Semiconductor Sensor for Carbon Monoxide

## Profile

Sensitive material of MQ-K7B gas sensor is  $\text{SnO}_2$ , which with lower conductivity in clean air. It make detection by method of cycle high and low temperature, and detect CO at low temperature (heated by 1.5V).The sensor's conductivity gets higher along with the CO gas concentration rising. At high temperature (heated by 5.0V),it cleans the other gases adsorbed at low temperature. Users can convert the change of conductivity to correspond output signal of gas concentration through a simple circuit.

## Features

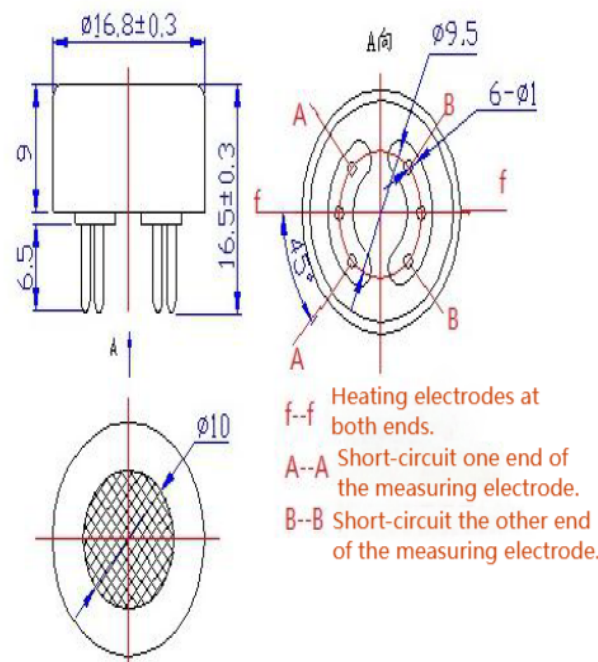
It has good sensitivity to carbon monoxide in wide range, and has advantages such as long lifespan, low cost and simple drive circuit &etc.

## Main Applications

It is widely used in domestic CO gas leakage alarm, industrial CO gas alarm and portable CO gas detector.

## Technical Parameters

Model			MQ-K7B
Sensor Type			Semiconductor
Standard Encapsulation			Plastic cap
Target Gas			carbon monoxide
Detection range			10~500ppm CO
Standard Circuit Conditions	Loop Voltage	$V_c$	$5.0V \pm 0.1V$ DC
	Heater Voltage	$V_H$	$5.0V \pm 0.1V$ AC or DC (High temp.) $1.5V \pm 0.1V$ AC or DC (Low temp.)
	Heater Time	$T_L$	60 S $\pm$ 1S (High temp.) 90 S $\pm$ 1S (Low temp.)
	Load Resistance	$R_L$	Adjustable
Sensor character under standard test conditions	Heater Resistance	$R_H$	$30\Omega \pm 3\Omega$ (room temp.)
	Heater consumption	$P_H$	$\leq 950\text{mW}$
	Sensitivity	$S$	$R_s(\text{in air})/R_s(\text{in } 150\text{ppm CO}) \geq 5$
	Output Voltage	$V_s$	2.5V~4.3V (in 150ppm CO)
	Concentration Slope	$\alpha$	$\leq 0.6(R_{300\text{ppm}}/R_{50\text{ppm CO}})$
Standard test conditions	Tem. Humidity	$20^\circ\text{C} \pm 2^\circ\text{C}$ ; 55% $\pm$ 5%RH	
	Standard test circuit	$V_c: 5.0V \pm 0.1V$ ; $V_H$ (High temp.): $5.0V \pm 0.1V$ $V_H$ (Low temp.): $1.5V \pm 0.1V$	
	Preheat time	Not less than 48 hours	
	O2 content	21% (not less than 18%) O2 concentration effects initial value, sensitivity and repeatability.	
	Preheat time	Over 48 hours	
Lifespan			10 years



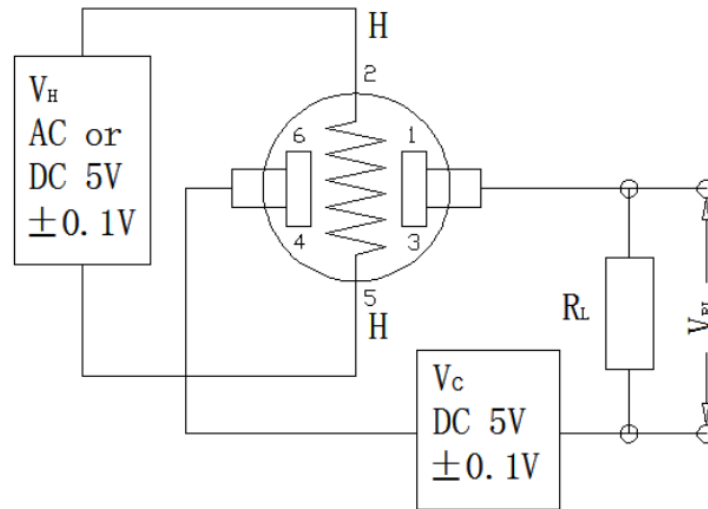
**Fig1.** Sensor Structure

Unit: mm

Tolerance:  $\pm 0.1\text{mm}$

NOTE: Output voltage ( $V_s$ ) is  $V_{RL}$  in test environment.

## Basic Circuit



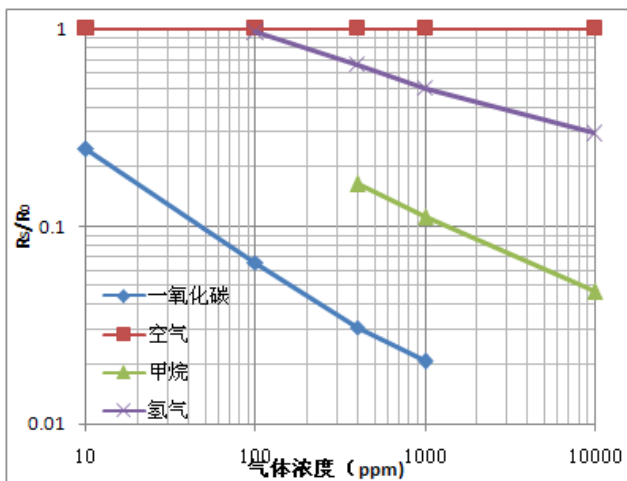
**MQ-K7B Test Circuit**

**Instructions:** The above fig is the basic test circuit of MQ-K7B. The sensor requires two voltage heater voltage ( $V_H$ ) and circuit voltage( $V_C$ ).  $V_H$  is used to supply standard working temperature to the sensor and it can adopt DC or AC power. For this model sensor,  $V_H$  should be at  $1.5V \pm 0.1V$  low voltage when detect CO while should be at  $5V \pm 0.1V$  at non detection status(resuming period).  $V_{RL}$  is the voltage of load resistance  $R_L$  which is in series with sensor.  $V_C$  supplies the detect voltage to load resistance  $R_L$  and it should adopts DC power. Calculation formula:

Resistance of Sensitive materials ( $R_s$ )= $(V_C/V_{RL}-1) \times R_L$

Power consumption of Sensitive materials ( $P_s$ )= $V_C^2 \times R_s / (R_s + R_L)^2$

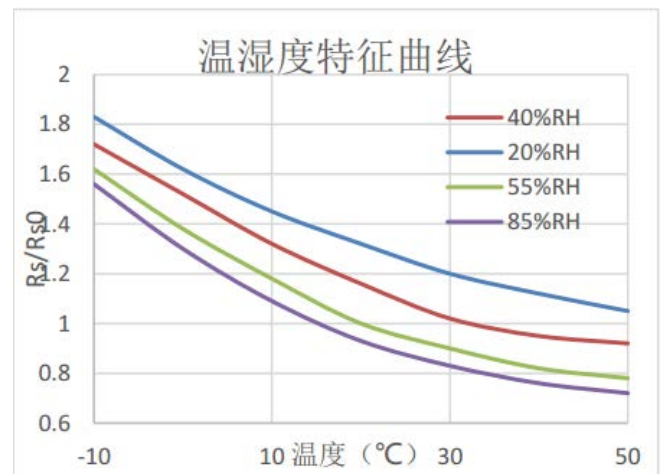
## Description of Sensor Characters



**Typical Sensitivity Curve**

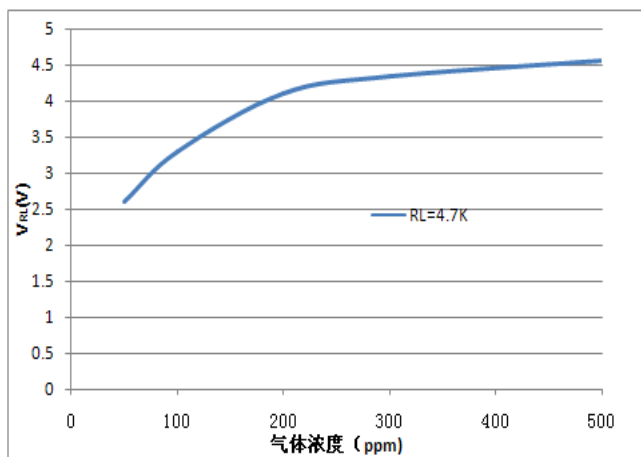
The ordinate is resistance ratio of the sensor ( $R_s/R_0$ ), the abscissa is concentration of gases.  $R_s$  means resistance in target gas with different concentration,  $R_0$  means resistance of sensor in clean air. All tests are finished

- under standard test conditions.



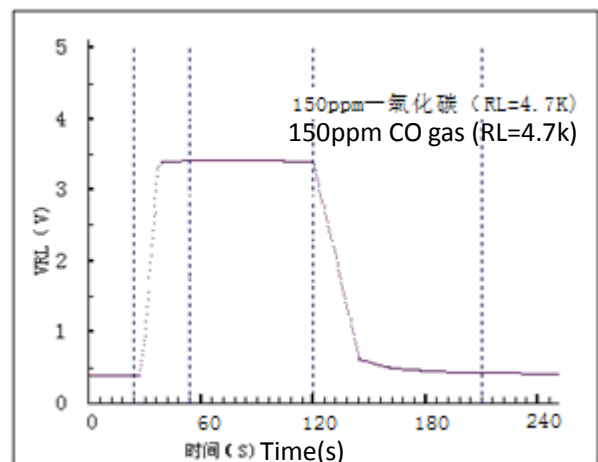
**Typical temperature/humidity characteristics**

The ordinate is resistance ratio of the sensor ( $R_s/R_{s0}$ ).  $R_s$  means resistance of sensor in 150ppm CO gas under different tem. and humidity.  $R_{s0}$  means resistance of the sensor in 150ppm CO gas under 20°C/55%RH.



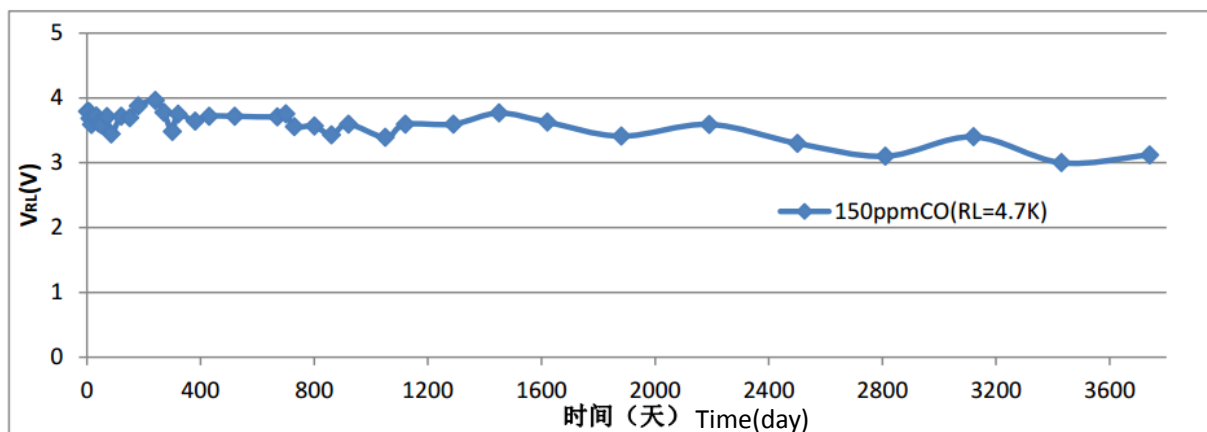
**Sensitivity Curve**

Fig5 shows the  $V_{RL}$  in CO gas with different concentration. The resistance load  $R_L$  is 4.7 K $\Omega$  and the test is finished in standard test conditions.



**Response and Resume**

Fig5 shows the changing of  $V_{RL}$  in the process of putting the sensor into target gas and removing it out.



**ong-term Stability**

Test is finished in standard test conditions, the abscissa is observing time and the ordinate is  $V_{RL}$ .

## Cautions

### 1 .Following conditions must be prohibited

#### 1.1 Exposed to organic silicon steam

Sensing material will lose sensitivity and never recover if the sensor absorbs organic silicon steam. Sensors must avoid exposing to silicon bond, fixture, silicon latex, putty or plastic contain silicon environment.

#### 1.2 High Corrosive gas

If the sensors are exposed to high concentration corrosive gas (such as  $H_2S$ ,  $SO_x$ ,  $Cl_2$ ,  $HCl$  etc.), it will not only result in corrosion of sensors structure, also it cause sincere sensitivity attenuation.

#### 1.3 Alkali, Alkali metals salt, halogen pollution

The sensors performance will be changed badly if sensors be sprayed polluted by alkali metals salt especially brine, or be exposed to halogen such as fluorine.

#### 1.4 Touch water

Sensitivity of the sensors will be reduced when spattered or dipped in water.

#### 1.5 Freezing

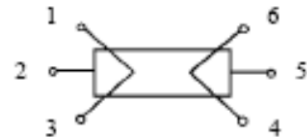
Do avoid icing on sensor's surface, otherwise sensing material will be broken and lost sensitivity.

#### 1.6 Applied higher voltage

Applied voltage on sensor should not be higher than stipulated value, even if the sensor is not physically damaged or broken, it causes down-line or heater damaged, and bring on sensors' sensitivity characteristic changed badly.

#### 1.7 Voltage on wrong pins

For 6 pins sensor, Pin 2&5 is heating electrodes, Pin (1,3)/(4,6) are testing electrodes (Pin 1 connects with Pin 3, while Pin 4 connects with Pin 6). If apply voltage on Pin 1&3 or 4&6, it will make lead broken; and no signal putout if apply on pins 2&4.



**Fig8. Lead sketch**

## 2 .Following conditions must be avoided

#### 2.1 Water Condensation

Indoor conditions, slight water condensation will influence sensors' performance lightly. However, if water condensation on sensors surface and keep a certain period, sensors' sensitive will be decreased.

#### 2.2 Used in high gas concentration

No matter the sensor is electrified or not, if it is placed in high gas concentration for long time, sensors characteristic will be affected. If lighter gas sprays the sensor, it will cause extremely damage.

#### 2.3 Long time storage

The sensors resistance will drift reversibly if it's stored for long time without electrify, this drift is related with storage conditions. Sensors should be stored in airproof bag without volatile silicon compound. For the sensors with long time storage but no electrify, they need long galvanical aging time for stability before using. The suggested aging time as follow:

Storage Time	Suggested aging time
Less than one month	Not less than 48 hours
1 ~ 6 months	Not less than 72 hours
More than six months	Not less than 168 hours

#### 2.4 Long time exposed to adverse environment

No matter the sensors electrified or not, if exposed to adverse environment for long time, such as high humidity, high temperature, or high pollution etc., it will influence the sensors' performance badly.

#### 2.5 Vibration

Continual vibration will result in sensors down-lead response then break. In transportation or assembling line, pneumatic screwdriver/ultrasonic welding machine can lead this vibration.

#### 2.6 Concussion

If sensors meet strong concussion, it may lead its lead wire disconnected.

#### 2.7 Usage Conditions

2.7.1For sensor, handmade welding is optimal way. The welding conditions as follow:

- Lead-free and halogen-free soldering flux
- homothermal soldering iron

- Temperature:  $\leq 350^{\circ}\text{C}$
- Time: less than 3 seconds

If disobey the above using terms, sensors sensitivity will reduce.